

## Emergency First Responder

### Cardiovascular Emergencies



+C

## Objectives

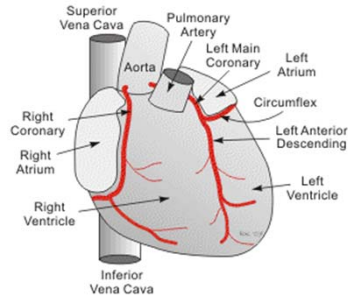
*By the end of this session you should be able to:*

- Manage the care of a patient with cardiac chest pain and understand post resuscitation care



+C

## Coronary Circulation



+C

## Cardiac Risk Factors

- Major risk factors that cannot be changed
  - Heredity
  - Gender
  - Age
  - Race
- Major risk factors that can be changed
  - Smoking
  - High blood pressure
  - Cholesterol
  - Obesity
  - Lack of exercise
- Contributing factors
  - Diabetes
  - Stress



+C

## Angina

- Brought on by exertion
  - Relieved by rest
- Previous history
- Central chest pain
- May radiate to
  - Arm, jaw, back
- Treatment: Rest and Medication



+C

## Heart Attack

- Persistent chest pain
- Difficulty in breathing
- Irregular or unusually fast or slow pulse
- Profuse sweating
- Moist, pale skin



+C



## Chain of Survival - Adult



+C



## Management of Cardiac Chest Pain

- Oxygen therapy
- Activate Emergency Services
- Aspirin 300mg PO
- Assist with administration of GTN if prescribed to patient
- Monitor vital signs



+C



## Resuscitation not indicated

- Definitive indicators of death:
  - Decomposition
  - Obvious Rigor Mortis
  - Obvious pooling
  - Incineration
  - Decapitation
  - Injuries totally incompatible with life



+C



## Post-Resuscitation Care

- Maintain oxygen therapy
- Recovery position
- Maintain patient at rest
- Monitor vital signs



+C



## Summary

- Recognition and management of cardiac chest pain
- Definitive indicators of death
- Post-resuscitation care



+C